



Luxury! behold in greens & purity.

Abodes - developed amidst forestry green scapes and pure life course luxuriated with organic farms that are exclusively managed by us. Each of them embraces the quintessence of farm house settling. Relive, as you saunter and chase the thickets around. Revel in stud activities. Feast on freshly farm produced delicacies served at the organic café. Fulfil your fitness goals by sipping healthy organic milk churned from the dairy farm. Discover the bounty of nature's imagination at the Butterfly park. Seek for serenity at Machan (Treehouse). Or satiate whatever your soul craves for!

Go, prepare your senses for an unusual beauty.



Co-op Farming!



Power! of nature;
purity of organic
life.



What you reap is sown organically by us! Life at Forrest Trails is purely inhaled amongst the organic farms. Every house is delineated for organic farms wherein vegetation and fruit trees will be cultivated sans the synthetic constituents.

Asides this, included is a dairy farm and an in-house eco logical production of organic agricultural products such as manure/seeds et al; which again would be reprocessed in the additional expansion of farming produce.



Forces of Mother Earth

Green House Retreat

As a part of the premeditated Forrest Trails is an extensive Green House; wherein the conception is to cultivate usual vegetation under controlled environment. Every bit of this project has a sense of timelessness and thus we have theorized Forrest Trails beyond a farmhouse living estate.

The Green House is crafted with modernistic yet energy-efficient materials which ultimately edits an arresting figure against the lush landscape in the entire community.



Hydroponics Farming

Hydroponics is a technique in which the presence of soil is skipped and the crops are grown directly in nutrient-rich water. Living amidst greenery is the eventual goal of Forrest Trails; which is why it has been co created, with the system of Hydroponic farming as well. The purpose is to nurture exotic veggies and herbs, which makes life here fulfilling in an all-inclusive natural terrain.

Thus, what you get to experience here is a mosaic of organic plots within a capacious narrative of organic repurpose, thereby embodying Forrest Trails a dense territory of pure earthy lifestyle.





What you lead here is not just a farmhouse living but a meaningful existence co – habited by natural values and a healthy enclosure.

At Pacifica, our every project is entrenched by little marvels that ensures an exemplary survival; and the foundation of Forrest Trails is self-sustenance within the spectrum of natural environ. Every detailing like getting the raw materials for farming to man power utility: is maneuvered ensuring zero wastage yet a seamless management of the plotted development. The aim of functioning this endeavour would be that whereby we work towards an objective to enable the entire community being operated, eventually without having to make any financial contribution towards extra maintenance fee for the upkeep of the community's common infrastructure.

What you lead here is not just a farmhouse living but a meaningful existence co – habited by natural values and a healthy enclosure.



Location Benefits

Benefited! by south west ahmedabad.

There is historical proof that shows us the south-west part of Ahmedabad has constantly experienced perpetual development. Being the entry point to the city for businessmen & visitors alike from the affluent regions of Rajkot, Surendra Nagar, Bhavnagar and many more, this belt is the latest investment nucleus known for its speedy development both in the residential as well the commercial sector.

PACIFICATM



C O M P A N I E S

Shaping real estate globally... since 1978

About Us

Pacifica Companies

Pacifica Companies is a USD 3 Billion Global Real Estate conglomerate with a shining history of creating distinctive life spaces across the globe. Since its founding in 1978, Pacifica has been consistently innovating & acquiring new credibility in the real estate sector for its ever expanding legion of developments includes residences, commercial spaces, mixed used projects, hospitality, townships & senior living communities.

Under the instrumental leadership of Ashok Israni, fondly called Mr. Ash Israni, Pacifica expanded & evolved on the solid principles of trust quality & ethics. Within two decades, the company developed a versatile reality portfolio & a powerful presence across 22 American states. At the turn of the century, Pacific advanced into the Indian Real estate scenario and since then it is developing quality projects in Ahmedabad, Vadodara, Deesa, Bengaluru, Hyderabad, Chennai & NCR.

Harnessing!
excellence thru
trust – quality –
ethics.

KESAR

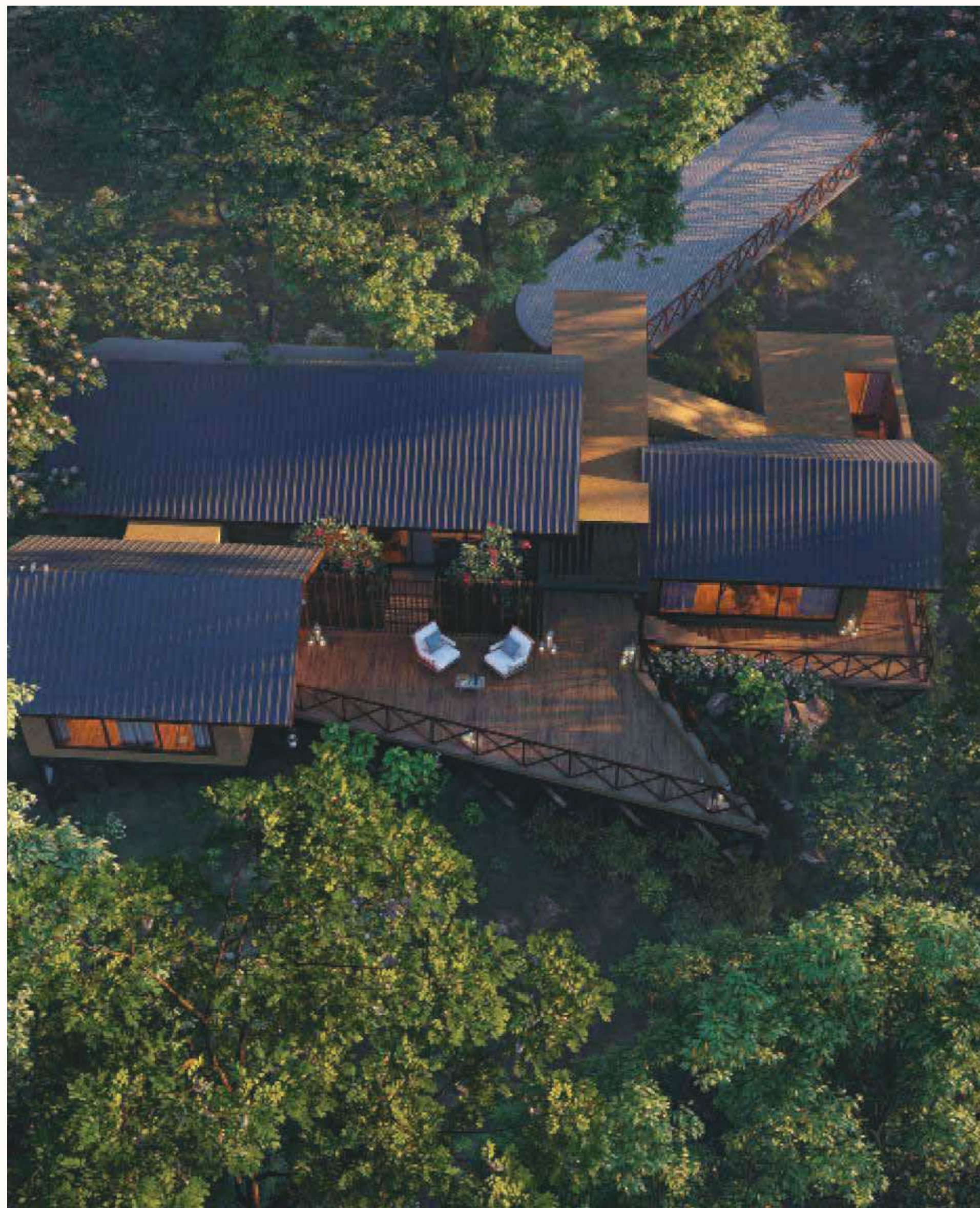
COMPANIES

Kesar Companies

Kesar Companies, established in the year 1993 by Shree Rajendra Joshi, popularly known as Raju Bhai Joshi, is a privately held company. A diversified powerhouse with interests ranging from Real Estate to Cold Storages and the Education Sector. The nucleus of the business activities has always stayed Real Estate with the bouquet of sectors represented, like the residential housing, industrial spaces & highstreet shopping centres to name a few.

The concept of bringing the bouquet of blessings to the residents of the Forrest Trails suits their style as they are one of the foremost names in the CSR activation for the betterment of the society and upliftment of the marginalized.

Giving! a new
meaning to life.



Architects

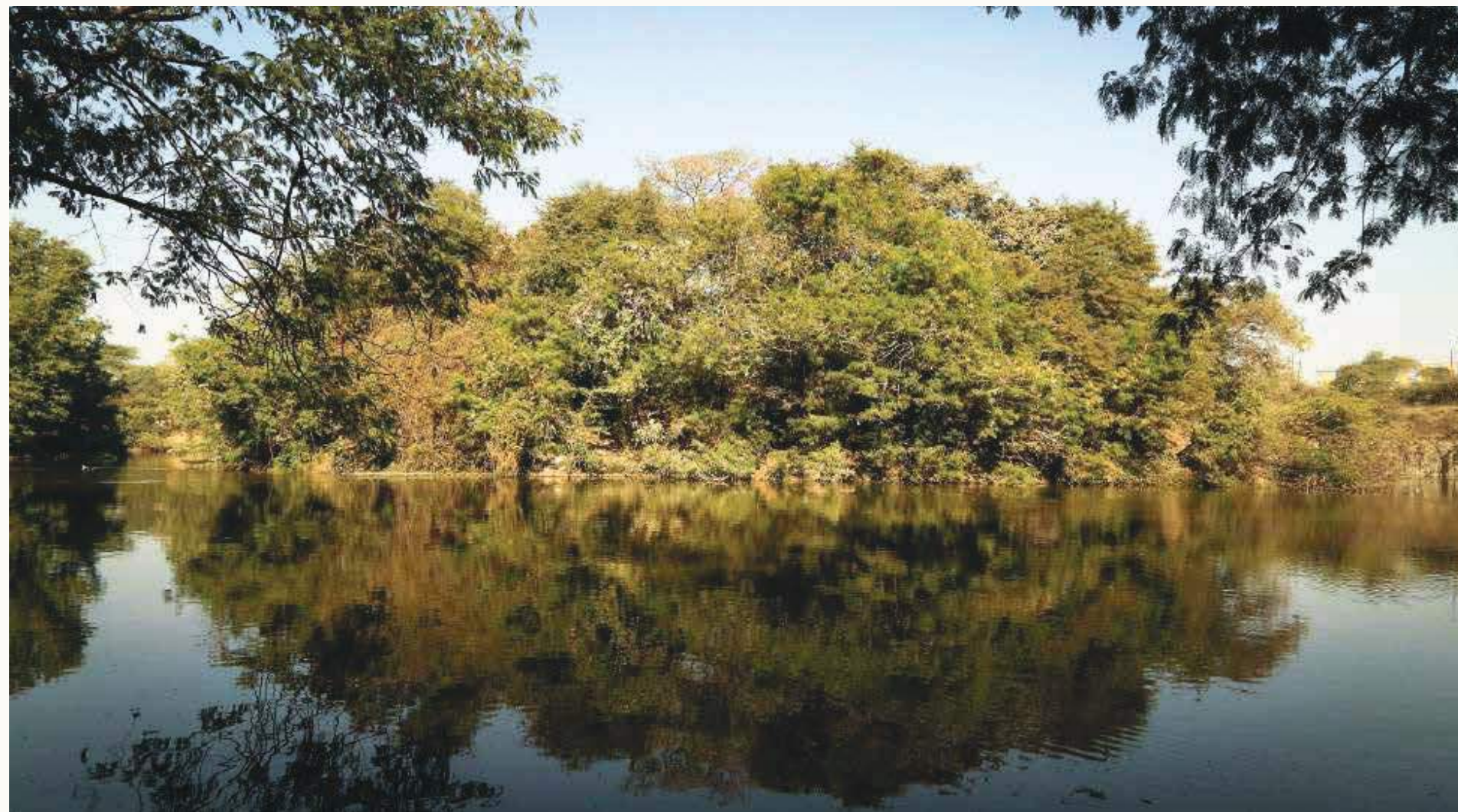
Designed! by
the country's
biggest names.

Forrest Trails is a venture co - envisioned by some of the most coveted landscaping & architectural firms in the country. Each of them has a credible influential experience; epitomizing Forrest Trails as a distinctive project with precise leading-edge detailing.

Few notable projects by M/s Prabhakar B. Bhagwat are:



Kanjurmarg - Lending identity through landscapes



Timba - Developing sustainable processes for the transformation of spaces.



Concept Master Plan by M/s Prabhakar B. Bhagwat

Built on a legacy of over 5 decades and 3 generations, M/S Prabhakar B. Bhagwat leads the thinking on evocative Landscape Design and Master Planning in the country and is highly regarded for the work in the areas of Architecture Design and Interior Design. It is consistently considered amongst the best landscape design firms in the world and its work is included in the Great Gardens of the World Initiative and Phaidon's compilation of distinctive practices.

The spaces that the studio creates reveal new narratives constantly; taking on more accountability than what one has seen to be the norm. These are integrated spaces that move away from existing in silos - becoming, at times, a comment on that which surrounds us, at others a tool to navigate our lives.

When the studio was founded by Prof. Prabhakar B. Bhagwat in 1973, the focus was on ideas of Sustainability, Ecology, and Plant Material. **While these have become the basis for all the work the studio undertakes, under Mr. Aniket Bhagwat - they continue to be designed to convey narratives and stories.**

The firm has won multiple awards, specially the International Federation of Landscape Architects (IFLA) awards, ever since the country has participated in this competition for the first two years.



Mr Aniket Bhagwat



Ghuma house - Reforming design processes, allowing for mindful perceptions and memory.



World One - Designing a lifestyle in compact spaces; with abundant amenities



Kharawala house - space-making that supports existing ideas of life and living



Udaan - Nature's Narratives intermingled with art.

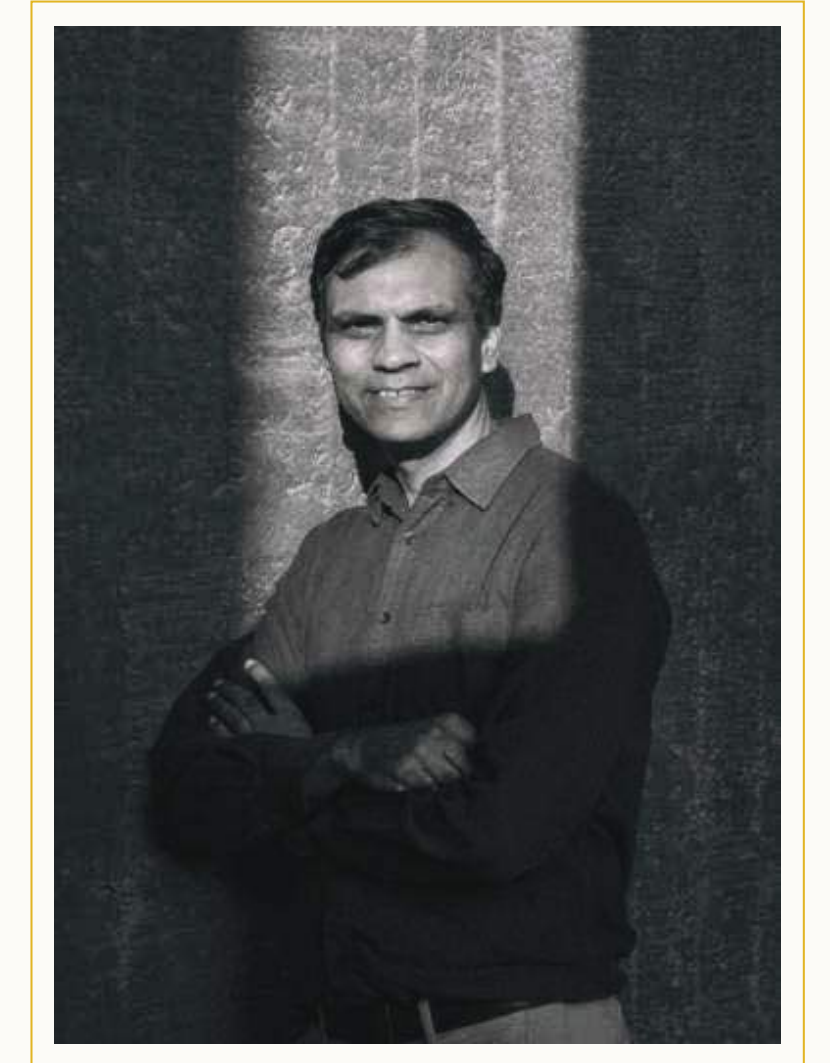
Few notable projects by Hiren Patel are:



The Tropical House



The Courtyard House



Hiren Patel

Hiren Patel Architects is a multi-disciplinary firm founded by Hiren Patel an architect, interior and landscape designer with a rich experience of 27 years. His work is emphasized by his innovative designs that blend man, nature and materials. Inspired by changes that life surprises with, Hiren reinterprets challenges as solutions for his architectural concepts. Hiren is also a painter and makes big water colour paintings drawing inventiveness from palette of landscape.



Aam Bagan



Frangipani

Few amongst many awards won by Hiren Patel:

- IID Anchor Awards for Excellence in Interior Design - 2013
- NDTV Design and Architecture of the Year Award for Institutional Award of the Year - 2016
- Kohler Bold Design Award for Bold Pelcil Award - 2016
- Festival of Architecture and Interior Designing for Excellence in Architecture & Design - 2018
- Foaid Design Perspective - 2019

Few notable projects by tHE gRID are:



A Cliff House



The Rock House

tHE gRID

tHE gRID is a multidisciplinary design firm based in the bustling city of Ahmedabad Gujarat India and was established in 2002. Snehal has done his Masters in sustainability and Bhadri is an Interior designer from APIED Vidyanagar Gujarat. They incorporate an array of design combinations and experiences, qualification and skills and are deeply committed to their passion.

Snehal Suthar and Bhadri Suthar, have set a mandate for contextual design, something that is timeless. Therefore, our designs are founded in simplicity and clarity, and create structures that are closely connected to the earth. While we strive towards compelling and dynamic spaces, we do so by combining clarity with quiet and thoughtful innovation; we endeavour to achieve the delicate balance of order and invention followed by integrity in work.

Our architecture and interiors are mindful of international standards of designs, including those for the physically challenged, known as Barrier free spaces and Green and sustainable biophilic buildings and spaces. The people are becoming more conscious about sustainability and save environment. The future of design is learning from the roots and implementing in today's technology. Our office/firm follows the philosophy of truth and honesty. The approach of the design philosophy of the firm was sensitivity to the profession chosen and the passion towards it.



*Snehal & Bhadri Suthar –
Founder*



Hawthorn 5 Star Resort



The Rock House

Some of the significant achievements by THE gRID :

- Listed In the Hot 100 Architects of India 2018 In Architects And Interiors India and Fab 50 2018 in Architectural Builder's Mag
- Nominated In The Dezeen Long List On 12th July 2019.
- Gihed Best Residential Building Award
- Gujarat's First Residential Green Building Platinum Award and Gold and Silver Building Award.
- Trends Architecture Excellence Awards 2017
- Cwab Best Interior Designer West Zone India 2018.
- Cwab Winner for Villa Design 2018

Few notable projects by Dhaval Patel Architects are:



Kaairos Resort and Spa



Vyapti - The Corporate Office



Dhaval Patel Architects

DPA - Dhaval Patel Architects

DPA is a multiverse firm that provides Architecture, Interior and Landscaping services. DPA has incorporates minute but perceptible details into the design of their architecture and interior. Over the years DPA has designed several resorts, luxury villa schemes, restaurants, residences and boutiques.



Radhe Upvan



Ramada Resort - Sasan Gir



Lakshmanpura - Villa Scheme



A Farm - Amit Thakker

Few notable projects by Beyond Green are:



The First



SUPERCITY



Beyond Green

Established in the year 2011 by Mr. Bobby Sujansingani and Ms. Rucha Nangare, Beyond Green provides a spectrum of services. Their primary objective is to make the design process itself enjoyable for the clients. The firm consists of young and enthusiastic people with creative design ideas who are also connected to academics in various formats. The studio is a free environment place for brainstorming sessions. Designing for them is forming of relationships and creating balance between the intricacy of Architecture, Landscape and the user.



Farmhouse in Rajkot



Exotica



Flame University



Epitome

Some of the significant achievements by :

- The project Opulence won the award for the best residential landscape design in Artist in Concrete Asia 2013 and 2014.
- The project Solitaire won the award for the best commercial landscape design in Artist in Concrete Asia 2013 and 2014.
- The project Hidden Experiences won the commendation award for the best residential landscape design in Artist in Concrete Asia 2014 and 2015.
- The project Chlorophyll won the best residential landscape design in Artist in Concrete Asia 2014 and 2015.
- The project Earth Arise won the commendation award for the best commercial landscape design in Artist in Concrete Asia 2014 and 2015.



Camouflaged! in lush avantgarde.

Forrest Trails is a symbiosis between nature and luxe in green spaces! It's a project in which we have employed modern yet contemporary methods of construction; allowing both the natural layout as well as a resplendent charm defining each of the houses. With every space abounded in verdant forest, we have ensured that your stay is ensconced in quietude of mother earth and pureness of an organic lifestyle.



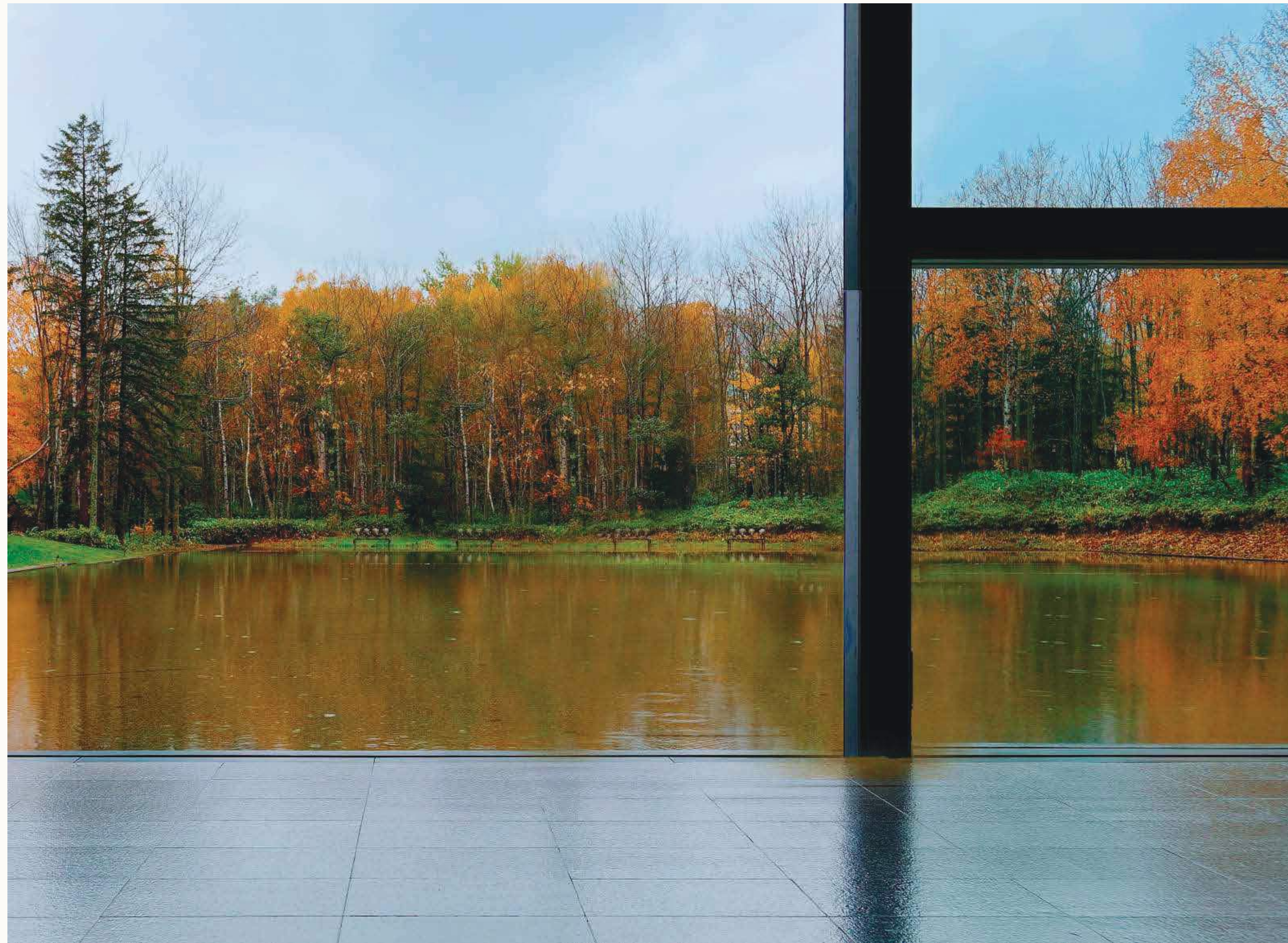




That's not all. The entire estate is a beyond farmhouse living culture. The development is amplified with the one-off concept of Co - op Farming community. Wherein the idea is to lead a self-sustainable lifestyle amidst organic farms and biological diversity. Forrest Trails is also equipped with comforts and conveniences like an expansive Green House, Hydroponic Gardens, farm to table café, cycling & walking trails etc, which makes your daily experiences unrivalled.

It's a dream within a dream.





Lagooned! By a scenic water body

Dreaming of a picturesque sparkling lagoon marvel by your window milieu? Forrest Trails is inclusive of a sustainable water body in the community, which offers a striking visual when viewed from the villa. The lagoon has been so precisely planned, that it doesn't disturb the entire project's development yet makes the environment more pleasing and infuses an enjoyable temperature to live in. Exuding a fascinating mix of magnificence and contemporary grandeur, the whole of Forrest Trails possesses a sheer beauty, that instantaneously invigorates and enthralls your senses.

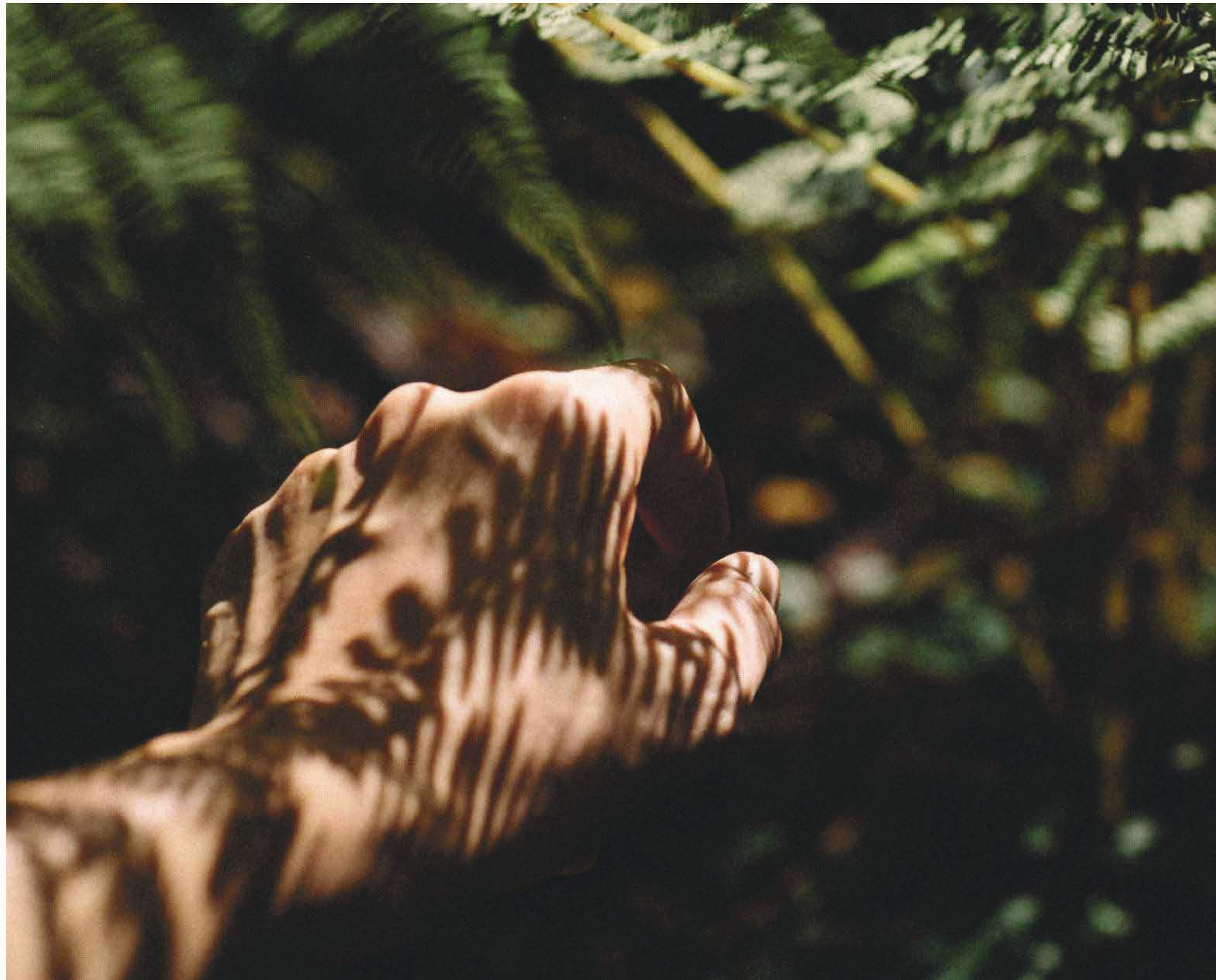
Come, be absorbed by the lagoon's scintillating exquisiteness!



Farm to Table Café

Spend an attractive getaway listening to the birds chirping as you dine inside this Farm to Table café. An organic, sustainable café situated at the heart of Forrest Trails. The Café is set both indoors and outdoors overlooking the curated luxurious landscape.

In the abundance of fresh - local produce, devour the delicacies from the seasonal organic menus of this earthy landscape. Experience the pureness of good organic food in the lap of nature.



A Find So Rare!

Amenities

At Pacifica, we strive to push the envelope of innovation. And the visual grammar of Forrest Trails is defined by its intramural amenities, which interprets everyone's needs. From organic farming to dairy farm, stud farm, grazing fields, cycling/walking trails, Machan Treehouse, Butterfly Park: it all assures that yours and your family's sojourn is absolutely enhancing and revivifying. Thus, investing here is not just a staycation home but it is a constant evocation of experiences which would only escalate taking newer approaches in the future.

You haven't arrived here yet.



Organic Farm

Exist amid the pureness of organic farms, cultivated and managed by us. All you need to do is lead a lifestyle rooted utterly in nature!



Dairy Farm

Indulge in the wholesomeness of fresh organic milk churned within an internal dairy farm; which is again overseen by us. Life is just so lusciously unsullied here.



Hydroponics Farm & Green House

A system which skips the soil and enables the growing of plants in nutrient rich water: is Hydroponic farming, which is a part of Forrest Trails. Thus, making this development an all-encompassing one which fulfils everyone's needs.



Stud Farm & Grazing Field

Spread over abundant acres, a surreal stud farm is included in Forrest Trails. Feast your eyes with the visual delight of horses being bred among lush greenery.

Forrest Trails also has a defined grazing paddocks for the cows. The cattle will be looked after by us and they will also be fed organic produce from the farms itself.



Cycling / Walking trails

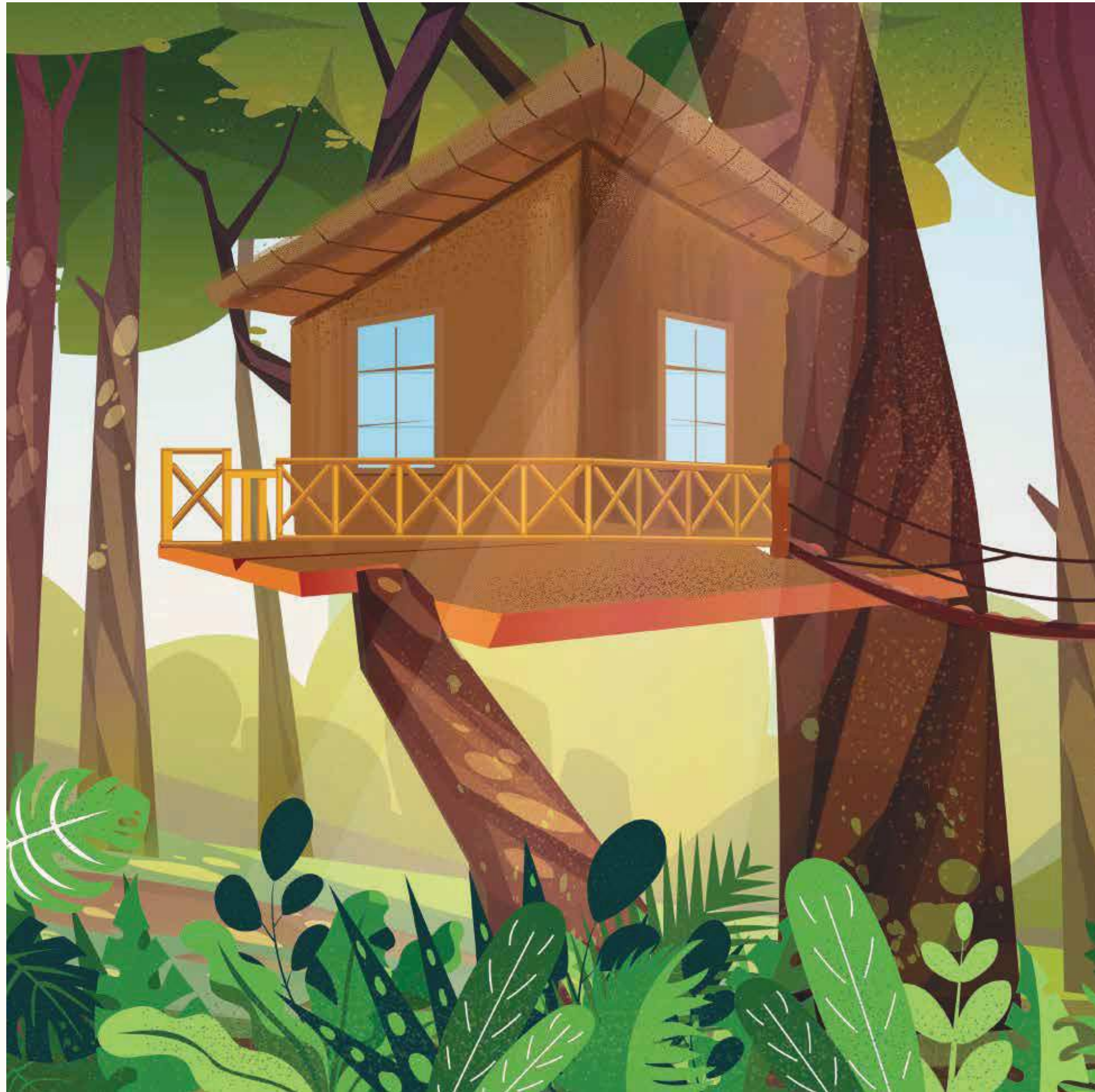
Forrest Trails has been conceived considering everyone's health regime. It has a designated cycling /walking trail as well. So that you can activate all your healthy habits without fail.



Farm to Table Cafe & Farmers Market

Not in a mood to cook? Then head to the in-house farm to table café – a place wherein you can relish delicacies made from the farm fresh yield.

Besides the produce grown in your villa, you can also explore a few more organic varieties from the weekly farmers' market.



Machan Tree House

Escape to serenity in huge Machan Tree houses featured exclusively in Forrest Trails. Nature is always so inviting here.



Butterfly Park

Spur your imagination with the exuberant beauty of butterflies in Forrest Trail's Butterfly Park. Chase after their grace and exquisiteness and be lost forever!



Master Plan

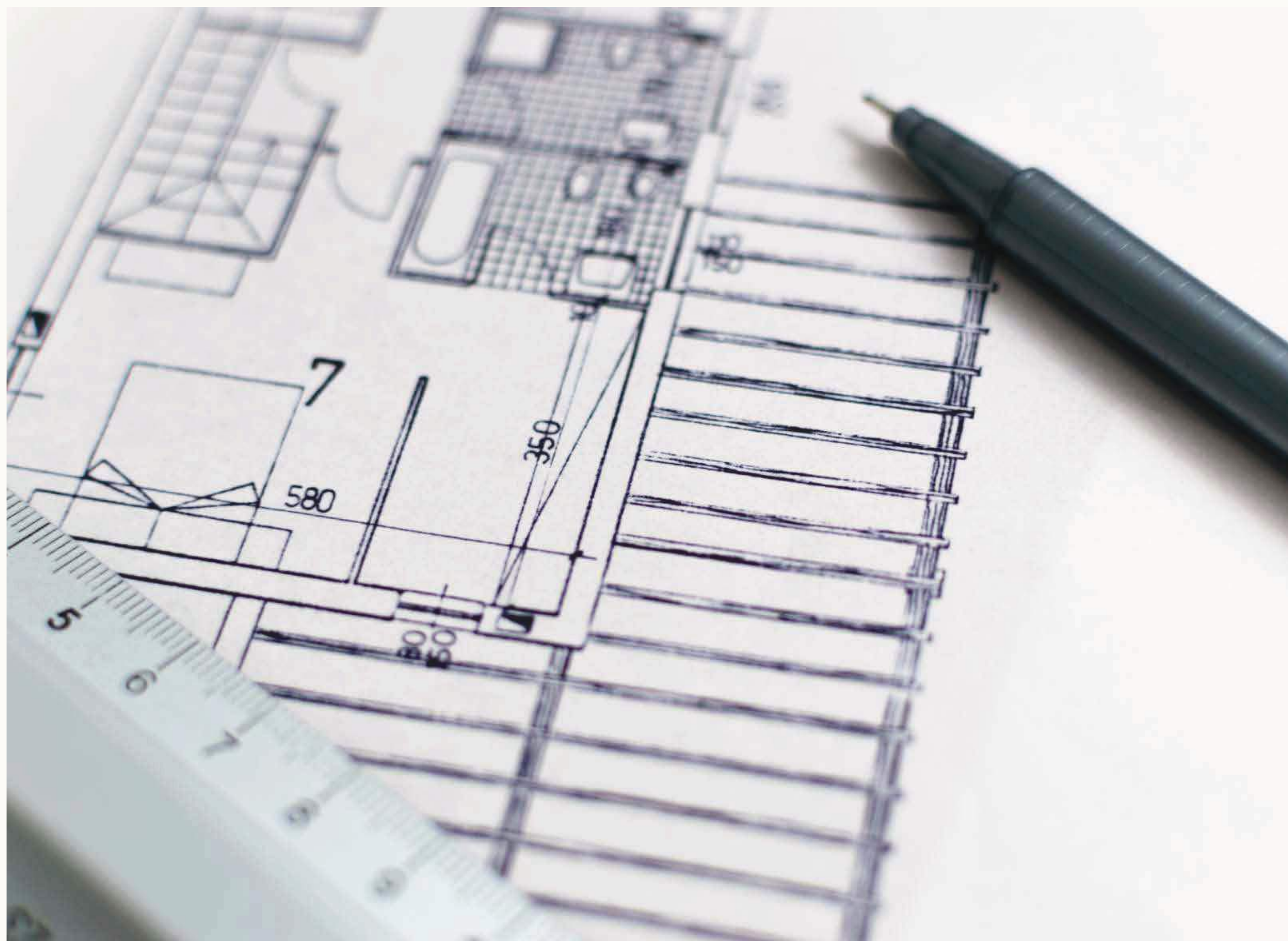
Known for their attention to detail, M/s Prabhakar B Bhagwat, have rendered a powerful concept master plan for Forrest Trails. Laying out a master plan for a terrain place like a Forrest is not easy; yet Aniket's keenness for minutiae and a large bank of industrial experience and guidance has resulted in a blueprint that is harmonious and a comprehensive. And Landscape Architects, Beyond Green has ensured that their designs at Forrest Trails create a balance between the intricacy of architecture, landscape & the community to help build a timeless, beautiful & Sustainable environment.

Forrest Trails' master plans decipher community values, needs, and revelations into land use and



Floor Plan

Putting the apt perspective into the space of every home in Forrest Trails are the floor plans by THE gRID Architects & DPA Architects. Floor plans are significant to display the relationship between rooms and spaces, and to convey how one can go through a property. Well thought floor plans is the highlight of any real estate scheme and for Forrest Trails, each of these floor plans have been thoroughly illustrated by the industry stalwarts.



LEGEND

- | | |
|--|--|
| 1. MAIN APPROACH ROAD | 27. WALKWAY ALONG THE ROAD |
| 2. ARRIVAL SPACE | 28. DECK ALONG WATER EDGE |
| 3. VISITOR PARKING | 29. COVERED SEATING PAVILION |
| 4. CAFETERIA | 30. PLAZA INFRONT OF HYDROPONICS AREA |
| 5. CAFE AND SEATING SPACE | 31. SEATING DECK WITH BENCHES ALONG WALKWAY |
| 6. MARKETING OFFICE | 32. PROVISION FOR HYDROPONICS AND GREEN HOUSE |
| 7. RECEPTION AND LOUNGE | 33. CHILDREN'S PLAY AREA AND OUTDOOR GYM SPACE |
| 8. EVENT FARM | 34. BARBEQUE AND SEATING SPACE FOR ZONE C |
| 9. WATER BODY | 35. ENTRANCE PLAZA |
| 10. COW SHED AND OTHER AMENITIES | 36. SEATING PLAZA UNDER TREE CANOPY WITH BENCHES |
| 11. SECURITY OFFICE | 37. OPEN SEATING SPACES |
| 12. INTERNAL CONNECTING ROAD | 38. BAMBOO GROVE |
| 13. PRODUCE OUTLETS PAVILIONS | 39. COMMON AMENITIES |
| 14. FARMS | 40. JOGGING TRACK |
| 15. MARKET AVENUES | 41. BARBEQUE AND SEATING SPACE FOR ZONE D |
| 16. BARBEQUE AND SEATING SPACE FOR ZONE A | 42. BARBEQUE AND SEATING SPACE FOR ZONE E |
| 17. PLAZA | 43. PLAZA |
| 18. BARBEQUE AND SEATING SPACE FOR ZONE B | 44. FLOWERING PLANTATION THAT ATTRACTS BIRDS |
| 19. FLOWERING PLANTATION ALONG THE ROADSIDE | 45. YOGA AND MEDITATION DECK |
| 20. SPACE FOR HORSE STABLE AND LAWN AREA | 46. PLAZA |
| 21. CHILDREN PLAY AREA AND OUTDOOR GYM SPACE | 47. OUTDOOR GYM |
| 22. INTERMEDIATE PLAZA | 48. OPEN BARBEQUE SPACE WITH LAWN |
| 23. CHILDREN'S PLAY AREA AND OUTDOOR GYM SPACE | 49. PLAY AREA |
| 24. NATURE SPA AREA | 50. BUTTERFLY GARDEN WITH STROLL PARK |
| 25. PLAZA WITH SCULPTURES AND THEME WALLS | 51. GARDEN SEATING SPACE |
| 26. MEDICINAL PLANTATION HUB | |





Saleable Plot Area : 1500 sqyd
 Saleable Villa Area : 4269.28 sqft

1. Otta	16'6" X 7'8"	8. Kitchen	12'0" X 13'0"
2. Vestibule	15'9" X 11'5"	9. Living Area	16'0" X 18'4"
3. Att. Toilet	5'6" X 9'0"	10. Dining Area	16'0" X 17'6"
4. G. Toilet	6'9" X 5'0"	11. Wash Yard	9'11" X 17'6"
5. M. Bedroom	12'0" X 20'5"		
6. Lap Pool	10'0" X 21'6"		
7. Store	5'5" X 4'10"		

Type - A (2 BHK) - Ground Floor



- 1. M. Bedroom 12'0" X 20'5"
- 2. Att. Toilet 12'0" X 5'0"
- 3. Mulipurpose Space 16'0" X 17'3"

Type - A (2 BHK) - *First Floor*



Saleable Plot Area : 1500 sqyd
 Saleable Villa Area : 3574.4 sqft

1. Pow. Room	6'11" X 3'11"	7. Wash Yard	9'6" X 14'3"
2. M. Bedroom	13'9" X 15'3"	8. Living Area	15'6" X 17'9"
3. Att. Toilet / Dressing	6'2" X 10'3"	9. Lap Pool	10'0" X 26'6"
4. Dining Area	15'6" X 15'1"		
5. Kitchen	10'8" X 11'3"		
6. Store	5'8" X 4'7"		

Type - B (2 BHK) - *Ground Floor*



- | | |
|---------------------------|---------------|
| 1. M. Bedroom | 13'9" X 15'3" |
| 2. Att. Toilet | 6'2" X 10'3" |
| 3. Multipurpose | 15'6" X 24'0" |
| 4. Stepout Balcony | 15'6" X 5'10" |

Type - B (2 BHK) - *First Floor*



Saleable Plot Area : 1500 sqyd
 Saleable Villa Area : 2213.92 sqft

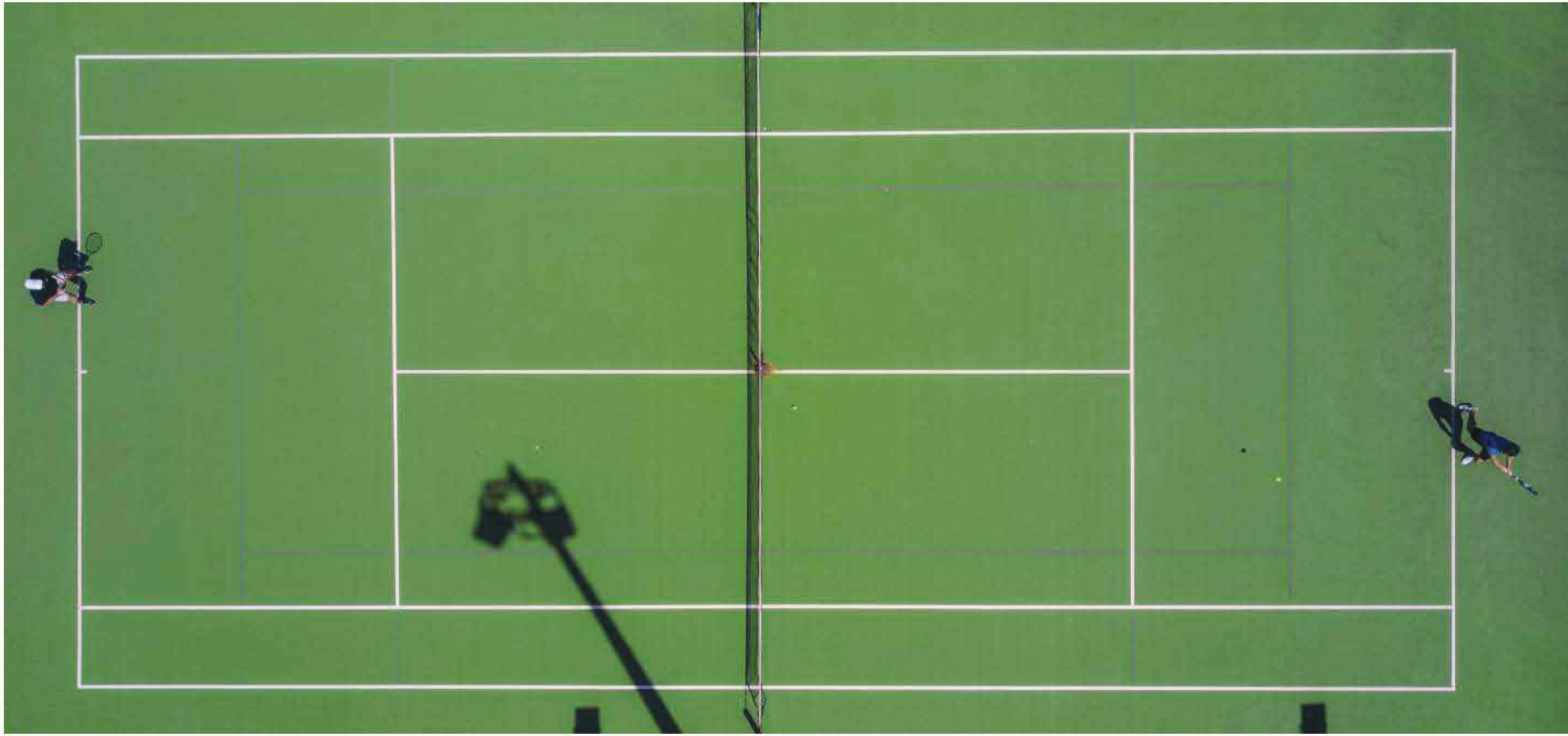
1. Att. Toilet	9'7" X 6'0"	7. Wash Yard	11'7" X 6'0"
2. Bedroom	14'0" X 13'0"	8. Living Area	15'9" X 13'0"
3. G. Toilet	5'3" X 6'3"	9. Infinity Pool	23'0" X 11'0"
4. Kitchen / Dining Area	11'7" X 13'0"		
5. Bedroom	14'0" X 13'0"		
6. Att. Toilet	5'3" X 11'0"		

Type - C (2 BHK) - *Ground Floor*



The YMCA! Advantage.

With YMCA here, Forrest trails is poised to be a major destination. Members of Forrest trails shall avail a free lifetime membership at YMCA Forrest trails. They shall also have access to the facilities of YMCA International Centre Ahmedabad as well. Does it get any better? With this advantage, imagine the entire plethora of amenities that you gain access to at Forrest Trails.



Thus here, farm house lifestyle is enriched with a refined living wherein you get to enjoy leisure & pleasure, business and mind rejuvenating pursuits right next door.

Forrest Trails is a project bound by beauty and brilliance.



Location Map

Disclaimer: The contents of this marketing ad including photographs, images, designs, plans, specifications, layout, height, dimensions, facilities, vegetation, features and communication are merely an artistic impression and imagination and may not have a resemblance to the actual project on-site. The actual and physical features, amenities and facilities in the buildings or the premises would be in accordance with plans and specifications approved by the authorities and the agreement for sale to be executed with the promoter.